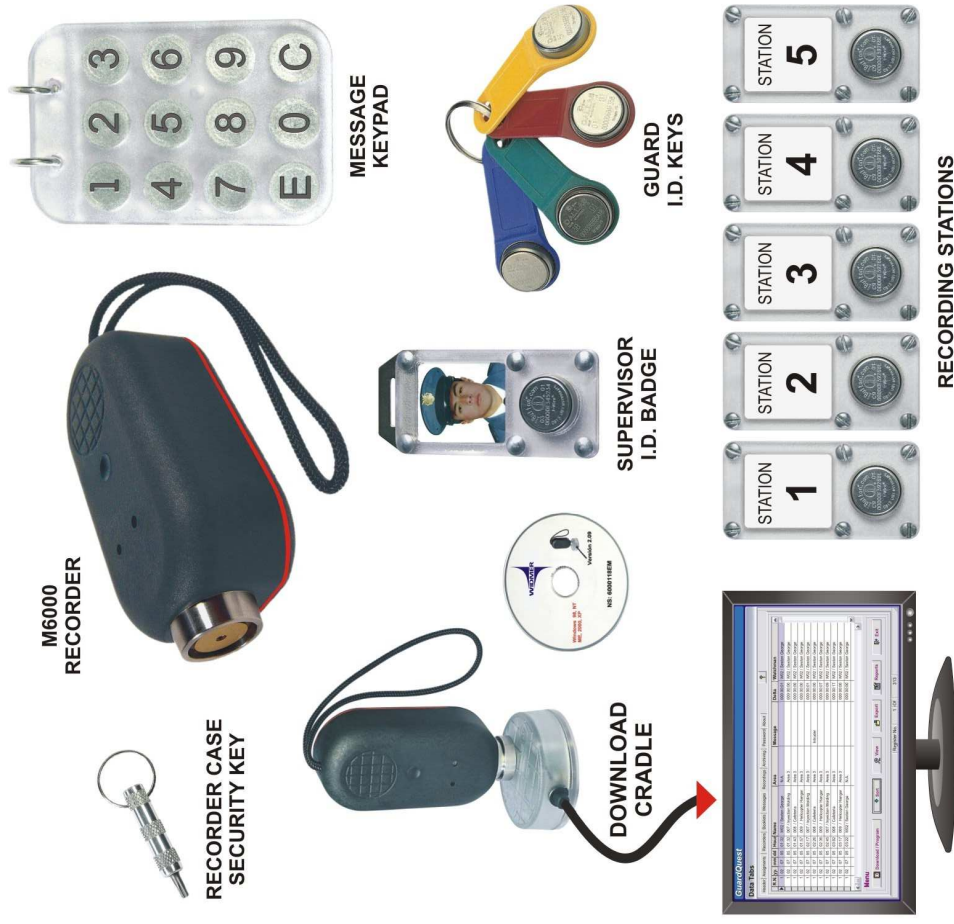


# GuardQuest System

The most sophisticated state-of-the-art Guard Tour ever!

## SYSTEM FEATURES AND BENEFITS

- During the guard tour the Watchman simply touches the M6000 recorder to a recording station chip placed at each Checkpoint and records date, time and station I.D. number.
- Direct data transfer to a PC via an RS232 port or USB adapter to a PC using the download cradle.
- Incredibly rugged, shockproof, waterproof and tamperproof casing.
- Employs state-of-the-art Dallas Semiconductor non-duplicable iButton® chips for Recording Stations, Guard I.D. Keys and Supervisor Badges.
- Flexible, expandable system design. Unlimited number of recording stations and tour guards.
- Keypad operated, heavy-duty incident Message Booklet.
- Extensive, configurable Reports afford greater visibility of the Tour.
- Real Time Clock with calendar-10 year life. Clock continues to run while replacing batteries - no need to reset time.
- Exports Reports to Windows Excel and other Databases.
- And more!



## Widmer Time Recorder Co., Inc.

Corporate Headquarters  
228 Park St. Hackensack, NJ 07601  
Toll Free 800-424-4459  
Tel: 201-489-3810 Fx: 201-489-3478  
sales@widmertime.com

New York Sales Office  
27 Park Place, New York, NY 10007  
Tel: 212-227-0405 Fx: 212-227-0526

www.widmertime.com

# GuardQuest System

Compact, light and easy to carry



## REPORTS:

- BY TIME & DATE.
- BY NAME OF SECURITY ELEMENT TO BE CONTROLLED (RECORDING STATION, GUARD, AREA.)
- BY RECORDER SERIAL NUMBER IF MORE THAN ONE RECORDER IN SYSTEM.
- BY MESSAGES (INCIDENTS OR REGULAR).
- EXCEPTIONS & PERFORMANCE REPORT (PER GUARD, PER STATION).
- MISSED STATIONS REPORT.
- BY ASSET REPORT (EXTINGUISHERS, VEHICLES).

GuardQuest is available in two configurations.

GuardQuest Basic includes M6000 Recorder, P6000 Download Cradle, Holster, 5 Recording Stations and basic software license.

GuardQuest PRO is the enhanced version and includes all of the items in GuardQuest Basic (10 Recording Stations), software license, 2 Supervisor / Guard ID keys and Incident Message Keypad.

### M6000 RECORDER SPECIFICATIONS

Weight: 150 grams (5.3 oz.)

Size: Length 3.88" (98.5 mm), Width 1.9" (48 mm), Height 1.36" (34.5 mm).

Memory: Non Volatile (NVO RAM). Capacity 5460 recordings.

Self powered Dallas Semiconductor real time clock (RTCC).

Power: 3 AAA alkaline 1.5 VDC batteries, duration 1 year or 500,000 recordings.

Casing Material: Lexan® 40 Glass Reinforced Polycarbonate.

Operating temperature: -40° to +185°F(-40° to +85°C).

2006/05/07 10:39

1

Recordings From 2006/05/03 To 2006/05/03 Filtered Recordings

R.N.	* Date	Hour	Name	Tour Area	Message Start	Type	Watchman
1	2006/05/03	06:02	Englander John	NA*	Watchman	Watchman	Englander John
1	2006/05/03	06:08	001 / Main Lobby	Main Office	Recording Station	Recording Station	Englander John
1	2006/05/03	06:16	002 / Sales	Main Office	Recording Station	Recording Station	Englander John
1	2006/05/03	06:21	003 / Customer Service	Main Office	Recording Station	Recording Station	Englander John
1	2006/05/03	06:27	004 / Basement	Main Office	Recording Station	Recording Station	Englander John
1	2006/05/03	06:33	005 / Accounting	Main Office	Recording Station	Recording Station	Englander John
1	2006/05/03	06:39	006 / Cafeteria	Main Office	Recording Station	Recording Station	Englander John
1	2006/05/03	06:45	007 / 1st Floor Restrooms	Main Office	Recording Station	Recording Station	Englander John
1	2006/05/03	07:15	001 / Main Lobby	Main Office	Recording Station	Recording Station	Englander John
1	2006/05/03	07:21	002 / Sales	Main Office	Message	Message	Englander John
1	2006/05/03	07:28	003 / Customer Service	Main Office	Recording Station	Recording Station	Englander John
1	2006/05/03	07:29	Low Battery	NA*	System Message	System Message	Englander John
1	2006/05/03	07:32	004 / Basement	Main Office	Recording Station	Recording Station	Englander John
1	2006/05/03	07:38	005 / Accounting	Main Office	Recording Station	Recording Station	Englander John
1	2006/05/03	07:41	006 / Cafeteria	Main Office	Recording Station	Recording Station	Englander John
1	2006/05/03	07:47	007 / 1st Floor Restrooms	Main Office	Recording Station	Recording Station	Englander John
1	2006/05/03	07:47	Englander John	NA*	Message	Message	Englander John
2	2006/05/03	06:05	Thompson James	NA*	Stop	Watchman	Thompson James
2	2006/05/03	06:20	008 / Machine Shop	Manufacturing	Start	Recording Station	Thompson James
2	2006/05/03	06:35	009 / Paint Shop	Manufacturing	Recording Station	Recording Station	Thompson James
2	2006/05/03	06:40	010 / Punch & Die	Manufacturing	Recording Station	Recording Station	Thompson James
2	2006/05/03	07:00	BD-604 Delivery Truck	Manufacturing	Vehicle	Recording Station	Thompson James
2	2006/05/03	07:01	Pennington Charles	NA*	Out	Supervisor	Thompson James

Typical Guard Tour Report

\*R.N. : Recorder Number  
\*NA : Non Applicable



## Widmer Time Recorder Co., Inc.

Corporate Headquarters

228 Park St. Hackensack, NJ 07601

Toll Free 800-424-4459

Tel: 201-489-3810 Fx: 201-489-3478

sales@widmertime.com

New York Sales Office

27 Park Place, New York, NY 10007

Tel: 212-227-0405 Fx: 212-227-0526

www.widmertime.com